

MACKINTOSH®

Kitchen Collection



On all Cabinets, Hinges  
and Drawer Boxes

Every Mackintosh kitchen comes with something we're confident you'll never need.

We guarantee that your kitchen cabinets will be free from defects in materials and workmanship for a full 20 years.

We also cover your doors and selected accessories for 15 years, so you can enjoy your new kitchen with complete confidence.

## Contents

<b>Modern</b>	<b>6</b>	Nouveau	46
Pure Jade	8	Nouveau Painted	48
Pure Carbon	11	Savoy Painted	50
Pure Cityscape	12	Timeless Painted	53
Pure Fossil	14	Timber Shaker Painted	54
Gladstone Oak	16	<b>Traditional</b>	<b>57</b>
Super Matt	20	Serenity Painted	59
Integral Painted	22	Manor House Painted	61
Autograph Painted	24	Harmony Painted	62
Oblique Gloss	26	Edwardian Painted	64
Oblique Painted	27	Minster Painted	66
Chic	28	<b>Customise</b>	<b>69</b>
<b>Shaker</b>	<b>31</b>	Door Collection	70
Sovereign	32	Truly Rigid Cabinets	74
Monarch	35	Handles	77
Sovereign Painted	36	Worktops	78
Sovereign	39	Lighting	80
Sterling Painted	40	Storage Solutions	83
Signature Painted	43	Sinks & Taps	88



Scan to see our amazing  
**Full Collection**  
of Mackintosh Kitchens





**DEPOSIT  
GUARANTEE**

## Complete peace of mind

Our deposit guarantee scheme offers you peace of mind and certainty when you purchase a kitchen from any of our approved retailers.

If your retailer ceases to trade before delivery of your furniture order, we will guarantee to supply your kitchen furniture at the quoted price.

Therefore, you can rest easy knowing that once you have paid your deposit, your kitchen furniture is secure, no matter what happens.

**MADE IN BRITAIN®**

Our quality kitchens are robust and durable with a stunning array of styling options. Our rigid cabinets are made to your order, using precision glue and dowel construction, creating a true rigid kitchen, with squarer, stronger cabinets and no visible screws or fixings.

Our kitchens have been awarded the Made in Britain status.



## Sleek designs for lovers of the minimalist look

Experience the epitome of modern living with our sleek and stylish kitchens, designed to be effortless and refined. Our modern kitchens are streamlined for urban living, offering a perfect blend of contemporary aesthetics and practicality. Each space is cultured and sophisticated, providing a chic environment for culinary adventures and social gatherings.



Pure Jade - Woodgrain Dark Oak

## Pure Jade

Discover the harmony of nature in your home with our modern kitchen design. Featuring Woodgrain Dark Oak doors paired with sleek Pure Jade doors, with an inset handle, this kitchen seamlessly blends organic textures and smooth finishes. Embrace simple, clean lines that bring the beauty of the outdoors inside.



Pure Carbon - Woodgrain Medium Oak

## Pure Carbon

Make a bold statement with our elegant kitchen design. Combining the striking Pure Carbon with the warm Woodgrain Medium Oak, this kitchen exudes sophistication and strength. The masculine style is artfully softened with refined surface finishes, natural paneling, and sleek handles, creating a perfect balance of boldness and elegance.



Pure Cityscape - Woodgrain Medium Oak

## Pure Cityscape

If you're seeking a kitchen that allows you to showcase your personal style, the Pure Cityscape is the ideal modern backdrop. Its clean, smooth design effortlessly complements any texture and finish, giving you endless possibilities to create the perfect centrepiece or your home.



Pure Fossil - Artstone Light

# Pure Fossil

The Pure Fossil design brings tranquillity and calm to any kitchen. When paired with Artstone Light, it creates a serene space perfect for relaxing, cooking, and conversation.





Gladstone Oak - Pure Cityscape

## Gladstone Oak

Transform your modern open space with a kitchen that adds depth and sophistication. By blending smooth finishes with rich, dark tactile tones, this design brings a cool and refined elegance to your culinary haven.





①

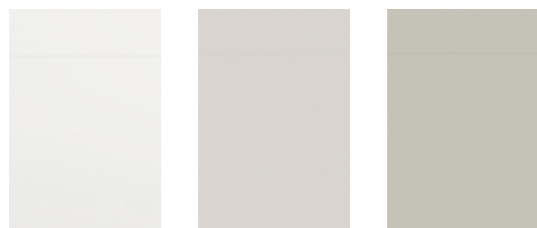
- ① Super Matt - Quartz & Flint
- ② Super Matt - Marine & Quartz

## Super Matt

These stunningly simple slab doors in a smooth, super matt finish are the ultimate in contemporary cool.

The subtle, muted appearance creates a sense of refined luxury and understated elegance. Lighter colours give a feeling of radiance and spaciousness, whereas darker tones exude an intense richness.

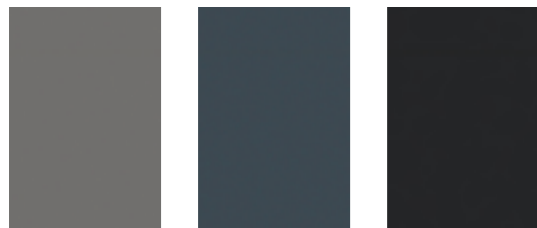
Create sharp styling with contrasting colours and add warmth and depth with dark wood accents and metallic accessories.



Quartz

Cotton

Clay



Flint

Marine

Jet



②



Super Matt Jet - Walnut

## Super Matt

Stylish, sleek, unabashedly bold - this striking pairing will create a refined and atmospheric feel. Uber cool slab kitchen in Super Matt Jet adds drama to the space, whilst the silky sheen of Walnut dark wood adds subtle texture and sophistication. Dramatic worktops and gold accessories add a touch of glamour.

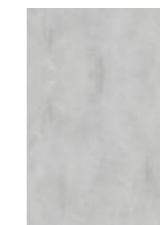


### Introducing our range of recycled doors

Made from recyclable wood collected from all over Europe, which is up-cycled through an eco-friendly process, creating a specialist wooden panel that is 100% recycled.



Artstone Dark



Artstone Light



Sylvan Oak



Walnut





- ① Spitfire
- ② Gloss
- ③ Anthracite

## Integral Painted

The clever J-pull door, with the handle integrated into the door design, makes this handleless door easy to use, ensuring a clean run of sleek styled units.

Available in 22 painted colours, this door looks cool and contemporary in a dark, dramatic colour like Anthracite, warmed with natural wood tones and tactile accessories.





Cashmere With Woodgrain New England Oak

## Autograph Painted

The Autograph is a statement kitchen style combining a slab door with a recessed handle. This profile creates a twist on the usual slab door, but still provides the uncluttered finish of a handleless kitchen.

Layer natural colours and textures, like New England Oak, with subtle tints and raw finishes for a warm and welcoming space that, whilst still contemporary, creates plenty of artistic impact.



Graphite & Limestone

# Oblique Gloss

This minimalist door, with a chamfered edge, is the practical, yet ultramodern choice for innovative kitchen designs and creates a clean, fresh, streamlined kitchen.

The sleek and unfussy design of the Oblique door fits elegantly in any modern kitchen. Shown here in the gloss finish, which is perfect for any busy family kitchen.



Oblique Painted - Cove Blue & Graphite

# Oblique Painted

This minimalist door, with a chamfered edge is the practical yet ultramodern choice for innovative kitchen designs and creates a clean, fresh, streamlined kitchen.

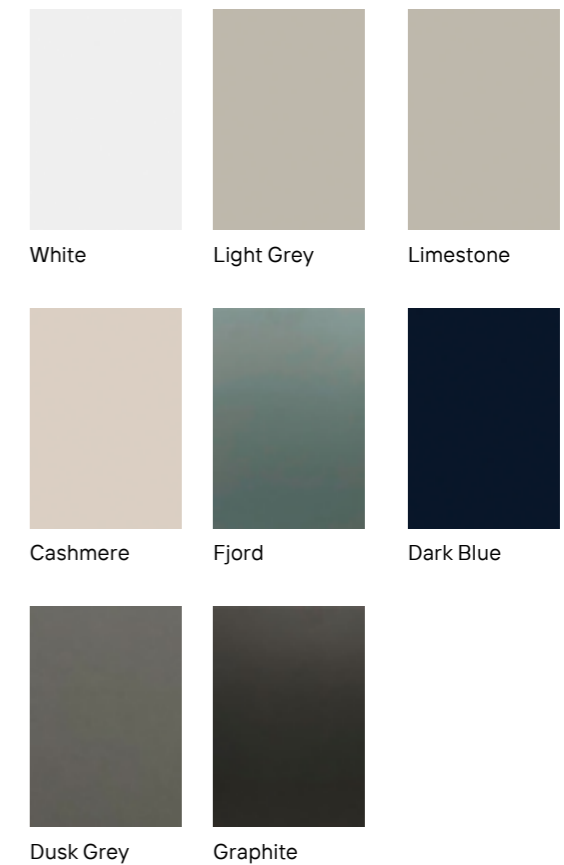
Available in 22 painted colours, you can express yourself however you feel - whether it's bold and dramatic, or subtle and refined - the choice is yours!



Chic Dark Blue - New England Oak

# Chic

Chic doors can be used to create a handleless Inset kitchen, for a streamlined, modern look. Choose from one of our popular colours, shown below, and pair with a wood effect door, to add depth, character and contrast to a room.





## A timeless symbol of quality and craftsmanship

Step into timeless elegance with our Shaker kitchens, where ageless charm meets practical functionality. These welcoming spaces are relaxed and full of character, combining natural materials with an elegant design. Our Shaker kitchens blend practicality with inviting warmth and are ideal for creating a homely atmosphere.



Sovereign Painted - Cove Blue

## Sovereign Painted

The Sovereign Shaker door has a graceful narrow frame and subtle woodgrain finish.

Nature's coastal tones bring a sense of tranquillity and harmony to your space for a relaxed, calming atmosphere. Opt for some open shelving or stylish seating in a wood-effect finish for warmth and texture.

Complete the scheme with a luxurious touch of gold for an eclectic look.

The understated tone of Cove Blue accentuates the luxury of the gold finish.

### Creating Timeless Elegance

The simplicity and elegance of a Shaker door works beautifully with a range of colours and styles to create a host of different effects.

Paired with wood countertops, Shaker kitchen cabinets will complete a classic, more traditional style, while paired with solid surface worktops, Shaker style kitchen doors will create a contemporary kitchen design.

Contemporary hardware upgrades the look of Shaker kitchen and can give a simple or luxurious look.



Sovereign - Jade

# Sovereign

Green is the new grey. The soft hues of Sovereign Jade provide the perfect backdrop for a modern classic shaker door. With its narrow frame and subtle woodgrain finish, this kitchen design is both timeless and enduring.





Sovereign - Limestone &amp; Indigo Blue

## Sovereign



Light Grey



Limestone



Indigo Blue



Jade



The bold contrast of Indigo Blue against Limestone gives a contemporary edge to this narrow framed Shaker kitchen. Along with industrial style open shelving and unfussy handles, creating a modern masterpiece is almost effortless.

Give yourself plenty of storage space with a Butler's Pantry to clear away all those awkward odds and ends.

Monarch Limestone

## Monarch

The Monarch features a smooth, modern shaker door in a sophisticated Limestone finish, adding depth and style to your kitchen. This design seamlessly blends timeless charm with the demands of modern living, creating a space that's both elegant and functional.



- ① Sterling Painted - Limestone & British Racing Green
- ② Sterling Painted - Indigo Blue & Light Grey

# Sterling Painted

This narrow framed Shaker door in a painted finish lends itself to a variety of looks and styles. The simple elegance can be dressed in either a modern, or traditional manner by careful choices with hardware and accessories.



Signature Painted - British Racing Green & White

## Signature Painted

This streamlined version of the original shaker design, with a narrower frame and a smooth finish, creates a contemporary look to a tried and tested classic.



Signature Painted: Inset - Spitfire Blue

## Signature Painted

Imagine the iconic profile of an imitable Shaker door with the streamlined, elegance of a handleless kitchen. You can now have the best of both worlds, with our inset handle tucked discreetly into the top of our Signature door.

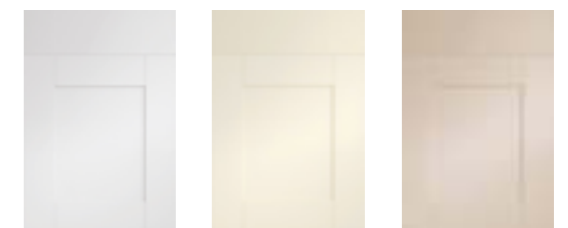




- ① Nouveau - Indigo Blue
- ② Nouveau Graphite

## Nouveau

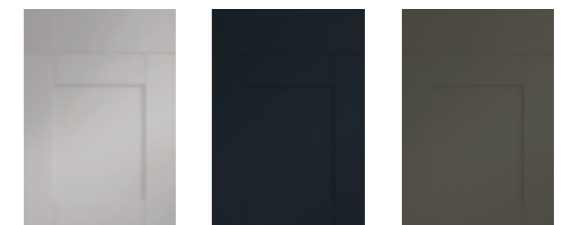
Available in a choice of six popular colours, the versatile Nouveau door has a smooth, clean finish and elegant lines. Match with a streamlined modern handle for an updated look.



White

Ivory

Cashmere



Light Grey

Indigo Blue

Graphite



Nouveau Painted - Limestone & Botanical Green

## Nouveau Painted

The timeless design of the Nouveau door had been given a vintage vibe, with traditional handles and taps, feature mantel and planked splashback.



Savoy Painted - Limestone &amp; Anthracite

## Savoy Painted

The Savoy kitchen can be defined as a modern take on the conventional Shaker. The unique styling incorporates the handle into the frame, thus allowing the elegance of a Shaker kitchen - with the contemporary look of a handleless door.



Timeless Painted - Light Grey

## Timeless Painted



The Timeless kitchen has smooth painted one-piece doors and lovely attention to detail in a classic Shaker style.

Available in a range of 22 painted colours for you to add your personal touch.



- ① Timber Shaker Painted - Oxford Blue & Light Grey
- ② Timber Shaker Painted - Cashmere

# Timber Shaker Painted



A solid timber kitchen, featuring five piece doors, epitomises the craftsmanship, durability and attention to detail of the Shaker kitchen.

Traditional elements, such as lever mixer taps, a Belfast sink and cup handles creates a homely, romantic feel.

Available in a variety of shades, you can mix and match colours to create the perfectly balanced style for you.





## Heritage Craftsmanship and Inviting Warmth

Embrace heritage and sophistication with our traditional kitchens, where refined craftsmanship meets distinctive design.

These cosy and inviting spaces are imbued with cultural richness and lavish details, offering a sense of timeless elegance. They are perfect for those who appreciate the charm of a well-crafted, heritage-inspired kitchen.



Serenity Painted - Pebble

## Serenity Painted

Serenity is a traditional shaker kitchen with a modern twist. Its slim frame, beading detail, and refined woodgrain finish make it perfect for the next generation of traditional kitchen enthusiasts.





Manor House Painted - Botanical Green

## Manor House Painted



A charming, traditional kitchen in a Shaker style with solid painted five-piece doors and a veneered centre panel with subtle beading detail.

It lends itself perfectly to creating kitchens with well loved dining and relaxing spaces that entice everyone in to enjoy its welcoming atmosphere.

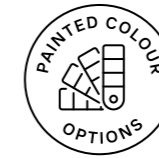


Harmony Painted - Sage

# Harmony Painted

The door of the Harmony kitchen is inset within a frame, which is fixed to the front face of the cabinet carcass. In-frame doors take inspiration from traditional cabinet construction in terms of quality, strength and durability.

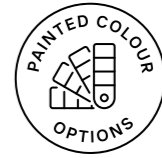
Available in 22 painted colours, this elegant kitchen has an enduring appeal for traditionalists and modernists alike.





- ① Cashmere
- ② Cove Blue

# Edwardian Painted



An in-frame effect door - that looks just as good as the real thing. The understated elegance of the Edwardian door lends itself to suiting most colour schemes, so you can be sure that it will look immaculate in any of our 22 painted colours.

Graphite &amp; Light Grey

## Minster Painted

A classic Shaker with a beaded centre panel in a smooth painted finish. Whilst retaining traditional elements, such as the plate rack and vintage style pendant lighting, the Graphite and Light Grey colour scheme gives this kitchen an up-to-date edge.





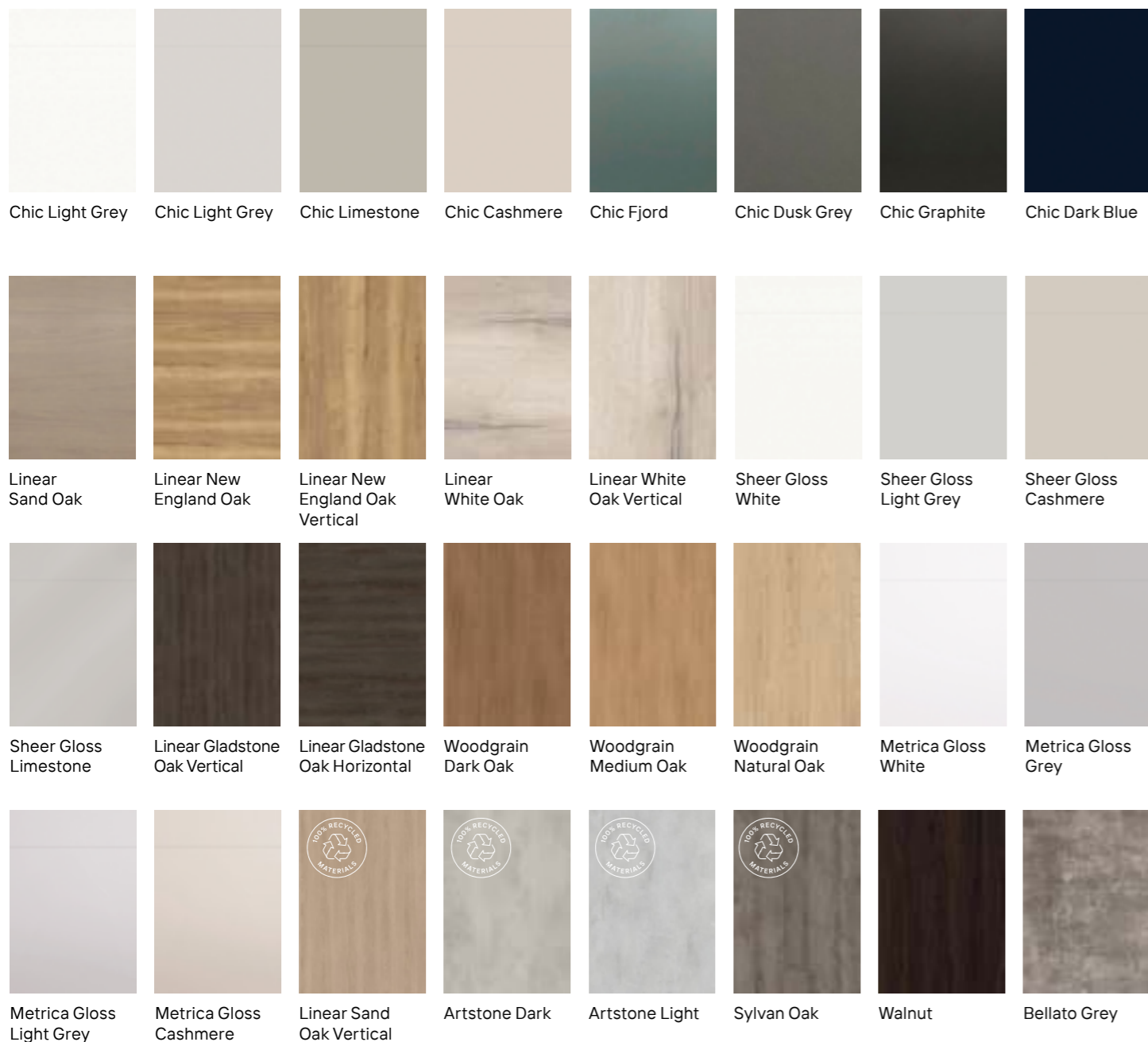
## Personalise every detail to reflect your unique style

Transform your kitchen into a personalised haven with our extensive customisation options. Choose from various doors, colours, cabinets, worktops, handles, lighting, sinks, and taps to create a space that truly reflects your taste and lifestyle. Our customisation service ensures every detail is tailored to your unique vision.

# Door Collection



## Contemporary Slab Doors



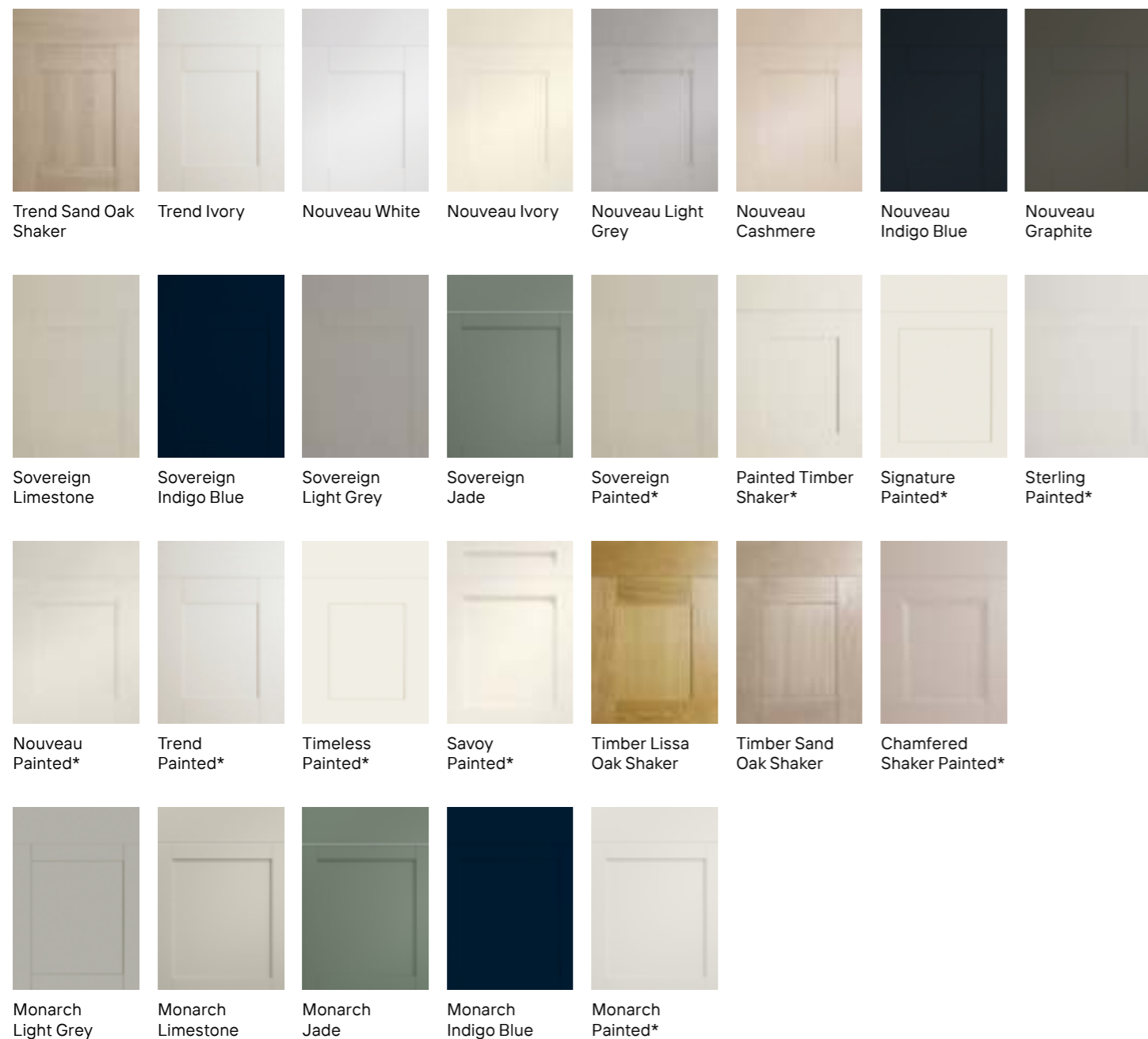
## Traditional Doors



\* Available in a choice of on-trend painted colours. See our extensive colour palette on page 83.

# Door Collection

## Shaker Doors



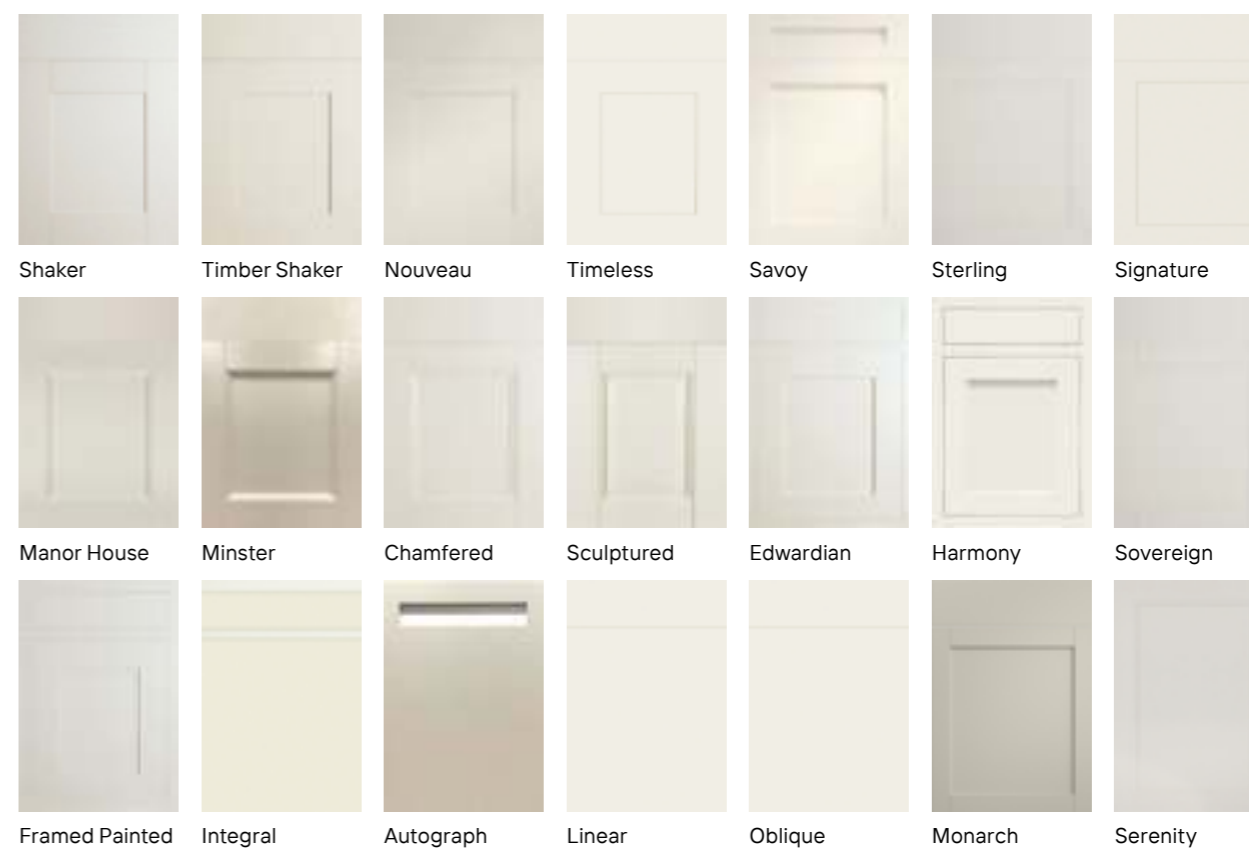
\* Available in a choice of on-trend painted colours. See our extensive colour palette opposite.

## Show Your True Colours



Each of the doors shown below can be painted in any of the colours on the left.

The colour palette you choose will set the tone for your kitchen's personality. Do you want your scheme to be warm or cool? Bold and lively, or tranquil and calm? All of the colours below make their own statement - it's up to you what you want them to say.



# Truly Rigid Cabinets

## Tailored To You - Ready To Install

Our truly rigid cabinets are drilled to your individual order. Units are fully constructed with doors, drawers, shelves and pull-outs pre-fitted in our factory for easy installation.

### All of our cabinets come with the below as standard:

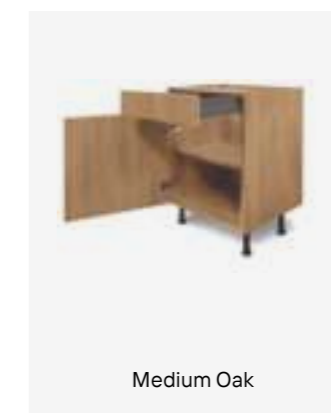
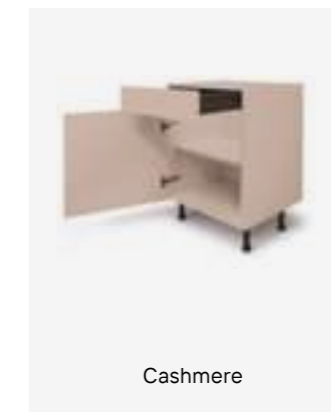
- Adjustable shelf positions
- Fascias can be adjusted in multiple directions to align the doors
- Choice of wall unit depth - 300mm or 350mm
- Choice of wall unit height - 576mm, 720mm or 900mm
- Choice of base unit depth - 460mm or 560mm
- Adjustable legs for fitting base units on uneven floors
- Glass shelves as standard for glazed units
- 50mm service void on 560mm deep base units



On all Cabinets, Hinges  
and Drawer Boxes

# Your Kitchen Your Colours

You can choose from a range of 11 cabinet finishes to contrast or coordinate with your door selection to create your individual kitchen style.



# Drawers



Our kitchen quality is further enhanced by the precision drawer systems supplied by our partner GRASS.

## Drawer Features

- Gentle and silent soft close motion prevents slamming of drawers and protects fingers.
- The contemporary GRASS Scala Stone drawer box colour complements our graphite cabinet colour option.
- Each drawer can carry up to 40kg whilst operating with a smooth easy opening action.
- The runners are protected from dirt ingress, maintaining the smooth operation and fully extend for easy access to the back of the drawer.
- Drawer frontals are easily removed to make cleaning easier, without the need for tools.
- With a clean ergonomic design, adjustment is on the inside of the drawer avoiding the need for plastic caps on the drawer sides.
- Maximised storage space with straight internal drawer sides.



GRASS® SCALA STONE

## Your Drawers - Your Choice



GRASS® SCALA STONE Pan Drawer **with rails**.



GRASS® SCALA STONE Pan Drawer **with smoked glass**.



**Luxury Oak Drawer Boxes**

Superior solid oak drawer boxes will add luxury to any kitchen. Drawers are constructed using the traditional dovetail joints, and fitted with GRASS® soft-close runners.



Scan to find the perfect handles for your kitchen



## Innovative and Impactful Handles

Make a statement with our diverse range of handles, designed to bring impact and creativity to your kitchen. From unusual and innovative designs to elegant and functional options, our handles add a harmonious touch to your space. Elevate your kitchen's aesthetic with handles that are as creative as they are practical.



# Worktops

Our wide range of worktop finishes gives you complete creative control over the base tones and textures of your new space.

We use the highest quality laminates, which provides peace of mind regarding sunlight damage, scratching, abrasion, coffee stains, tea stains, red wine, ink and small burns. No surprise that they hold the FIRA Gold Award for product excellence.

## The cutting edge

Our worktops are available in both square edged and post formed. Square is the more versatile, available in 40mm and 21mm. Post formed (bottom image) features a slightly curved profile.



Square Edged Profiling



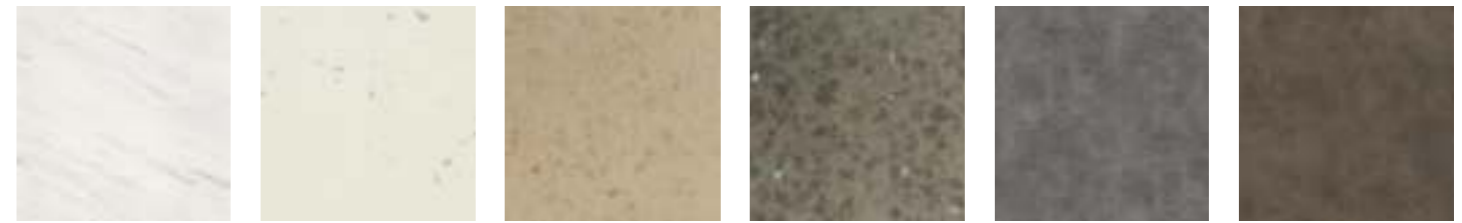
Post Formed Edge

## Backboards & Upstands

A practical feature provides an opportunity to express your style. An alternative to tiling can be extending the attractive worktop surface onto the back wall to protect from splashes and staining. Available in all worktop colours.



## Premium Range: Available Square Edge Only



White Levanto Marble    White Matt Nebula    Whitestone Nebula    Greystone Nebula    Anthracite Metal Fabric    Dark Grey Chicago Concrete



Black Gold Metal Slate    Blackstone Nebula    Sand Orleans Oak    Natural Halifax Oak    Truffle Brown Davos Oak    Grey Nebraska Oak

## Gable Ends

Elevate your surface spaces with a raised gable end, the perfect place to share cocktails with friends and tidy away the barstools when you're done. Available in square edged 40mm and 21mm, in all worktop colours.



## Classic Range: Available post-formed and square edge



Crystal Marble    White Sparkle Grain    Light Grey Valmasino Marble    Light Grey Chicago Concrete    Grey Sparkle Grain    Sand Beige Titanite



Black Sparkle Grain    Black Pietra Grigio    Oak Butcherblock    Grey Bardolino Oak    Walnut Buttherblock    Grey Brown White River Oak



# Lighting

The lighting scheme in your kitchen is essential to achieving the desired impact. Both practical and aesthetic considerations are critical to the design, our lighting collection will bring your kitchen to life.

## Under Cabinet Strip Lighting



**Under unit led strip link lights**  
 3 watt, 222mm long/5 watt, 343mm long  
 8 watt, 526mm long/16 watt, 904mm long

## Shelf Lighting



Glass Shelf Light



**Black Lit Shelf**  
 In Sizes 600 Or 900mm

## Under Cabinet Lighting



Triangular Light



Round Downlight



Rectangular Light  
 Brushed Aluminium



Rectangular Light  
 Black



Square Light



3 Bezel Colours Included -  
 Stainless Steel, White  
 And Black



Square Light  
 Stainless Steel Only

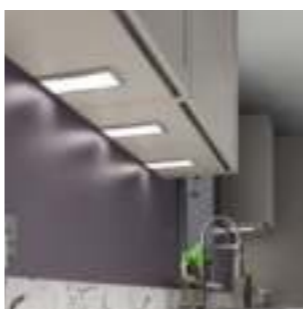
## Plinth Lighting



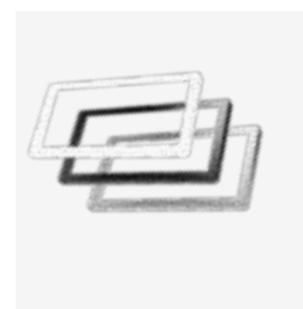
Round Plinth Light



Square Plinth Light



Tablet Light



3 bezel colours included -  
 stainless steel, white and black

## Flexible Strip Lighting



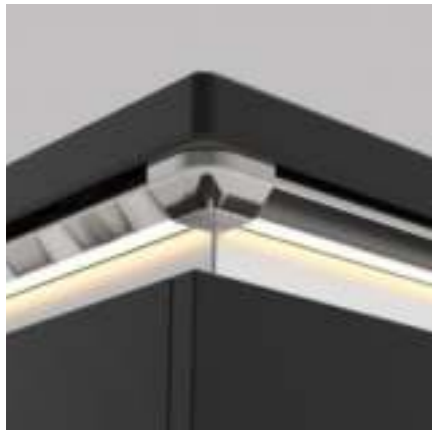
**Flexible Point Light**  
1m Strip Light, 4 Watts  
2m Strip Light, 8 Watts  
5m Strip Light, 20 Watts



**Flexible Solid Light**  
2m Strip, 12 Watts/5m Strip, 30 Watts



**Bendable Point Light**  
5m Reel, 24 Watts



2.5m Light Cover set for Inset/Oblique  
Internal corner and external corner



LED 2m Strip Light Cover

Speak to your retailer about any drivers, connectors or sensors that may be required for your lighting arrangements.

## Sockets & Switches



Pop Up Socket, stainless steel, spring loaded, manual pull, 3 power sockets, 2 USB sockets.



**Smart 24v driver with kinetic switch**  
The Wireless Kinetic Switch System enables lights to be operated by an app or with Amazon Alexa & Google Assistant for voice activated commands.  
15 watt driver, 4 ports / 30 watt driver, 6 ports.

## Coordinated Storage Solutions

With our storage and organisation solutions, you can achieve perfect order and efficiency. Our designs ensure every item has its place, offering maximum capacity and coordinated space. Whether you need to store large pots or small utensils, our solutions provide an orderly and efficient kitchen environment, making cooking a delight.



# Organisation & Storage

A fully functional, highly organised kitchen is also a beautiful one. Especially when it comes with a host of ingenious features and accessories, designed to make life easier, whilst looking great as well.



## Storage Solutions

To maximise space and provide fully accessible storage, a range of practical and decorative storage solutions are available in a variety of different sized base, wall, dresser and larder units.



## Cutlery Dividers

Drawer organisation for cutlery and utensils is available in a variety of different sizes and finishes. Your retailer will advise, to suit the width of your drawers.



## L-Shaped Corner Units

Designed to utilise the hard-to-reach corners of a kitchen, our L-Shape units provide optimum ease of access and valuable extra capacity.



## Waste Recycling

A variety of high quality pull-out bin options are available in multiple sizes. They provide a practical solution to your waste and recycling requirements.



# Clever Storage

Making your new kitchen as functional as it is attractive

During the kitchen planning process it's useful to design, not just how you'd like the space to look, but just as importantly, how you typically use your space every day; Where are the pots and pans kept? How easy is it to see the contents at the back of my shelves? Can I actually reach every area of my cabinets?

All of our kitchens come with the optional addition of Clever Storage products from Kesseböhmer, that means your new kitchen design won't just look great, but will make time spent unpacking shopping, preparing meals, and tidying up both quick and easy.



Standard Pull Out System - 300mm, 400mm, 500mm

Swing Pull Out System 300mm  
(Only available in Aluminium)



Tandem System 500mm



LeMans Corner Base System  
Easy access into corner cupboards 450mm, 500mm, 600mm



reddot design award

Experience the design every time you reach for a pot or pan with the LeMans Corner Storage system, awarded the Red Dot Design for outstanding design achievements.



IMOVE Pull Down Wall System Unit 600mm



Convoy System 600mm

# Sinks & Taps

Mackintosh's sleek stainless steel products are made of the highest grade steel available, which is resistant to staining, rusting and corrosion.



LIBRA 1.0 Bowl Small



LIBRA 1.0 Bowl



LIBRA 1.5 Bowl



TITAN 1.0 Inset Bowl Compact



TITAN 1.0 Inset Bowl



TITAN 1.5 Inset Bowl



EUROPA 1.0 Bowl Compact



EUROPA 1.0 Inset Bowl



EUROPA 1.5 Inset Bowl



JUPITER 1.5 Bowl (reversible)



SATURN 1.0 Bowl Undermount



SATURN 1.5 Bowl Undermount



NOVA 1.0 Bowl Undermount Small



NOVA 1.0 Bowl Undermount Large



NOVA 1.5 Bowl Undermount



Crystal 1.0 Bowl Sink



Crystal 2.0 Bowl Sink



BELFAST 1.0 Bowl Sink



HYDRA 1.0 Bowl (White)



HYDRA 1.0 Bowl (Grey)



HYDRA 1.0 Bowl (Black)



HYDRA 1.5 Bowl (White)



HYDRA 1.5 Bowl (Grey)



HYDRA 1.5 Bowl (Black)



CHARON Chrome



CHARON Black



CHARON Grey



CHARON Brushed



CHARON White



ELARA Chrome



U NECK SINGLE LEVER Chrome



FLEXIO Chrome



ERIS Brushed



SWAN Chrome



EVA Brushed



IDA Black



IDA Brushed



IDA Chrome



IDA Grey



IDA White



CORA Brushed



LIBERTY Chrome



LEDA Chrome



COX CRUCIFORM Chrome



LEDA Black



LEDA Brushed



LEDA Grey



LEDA White

Our HYDRA sinks offer a striking impression or a classic style. The 80% quartz granite also has anti-bacterial properties, as well as being resistant to heat, burns and stains.

# Discover more online

## Our Virtual Showroom

Bring our stunning showroom into your home with our virtual 3D tour. Explore over 60 different kitchen displays from the comfort of your home.

## Kitchen Visualiser

Use our online kitchen tool to visualise your dream kitchen. Visualise all of our ranges in any colour with a choice of worktops and accessories.

## Find a Showroom

Our kitchens are available through a range of retail partners across the UK. Find your nearest showroom to discuss your individual requirements and bring your dream kitchen to life.

[www.mackintoshkitchens.co.uk](http://www.mackintoshkitchens.co.uk)



As Britain's leading supplier of quality kitchens we have enjoyed continued growth for over 25 years.

Our state-of-the-art factory and manufacturing capabilities guarantee that we provide our partners with the quality and service they deserve. We make it our mission to provide the stability and reassurance required in today's uncertain market, and hold vast quantities of stock to ensure continued supply, with no hold-ups.

For more information and up to date ranges, please visit: [mackintoshkitchens.co.uk](http://mackintoshkitchens.co.uk)

All images in this brochure are for illustrative purposes only.

In the interest of product development, we reserve the right to change colours, specifications and design without prior notice.

Whilst the colours in the brochures are matched as closely as possible, we cannot guarantee exact replication of colour or finish and therefore recommend visiting your nearest retailer to view a sample before placing your order.

**MADE IN BRITAIN**®



Scan to find out more about our sustainability measures.

MACKINTOSH®

[www.mackintoshkitchens.co.uk](http://www.mackintoshkitchens.co.uk)